

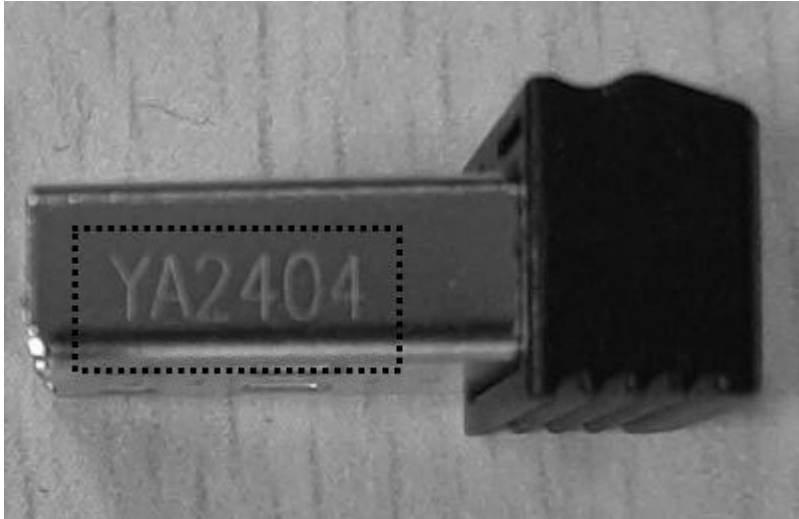
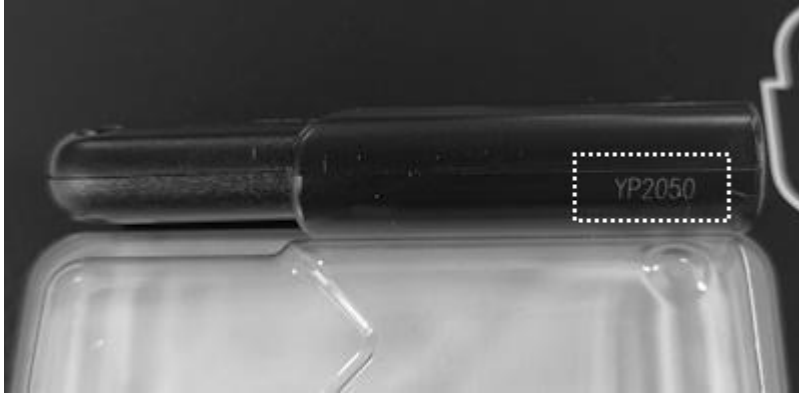


Product Traceability - EMTEC

1. USB Flash Drives

All our USB flash drives have a batch number laser-engraved on the side of the body or the USB connector:

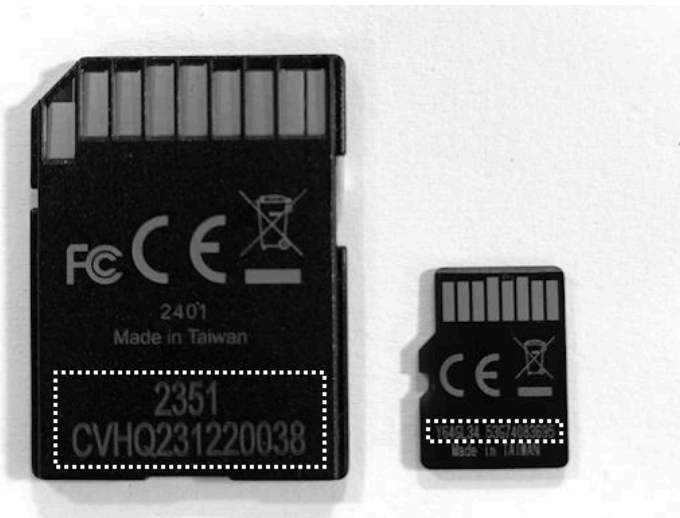
See photos below:



2. SD and MicroSD Memory Cards

All our memory cards have a batch number laser-engraved on the back of the card.

See photos below:



3. External SSD USB 3.2

All our external SSDs have a serial number labeled on the back of the SSD and on the packaging.
See photos below::



4. Internal SSD SATA 2.5"

All our internal SATA 2.5" SSDs have a batch and serial number labeled on the back of the SSD and on the packaging. See photos below :



5. Internal SSD M.2 SATA and PCIE

All our internal M.2 PCIE and SATA SSDs have a batch and serial number labeled on the front of the SSD and visible through the transparent packaging.

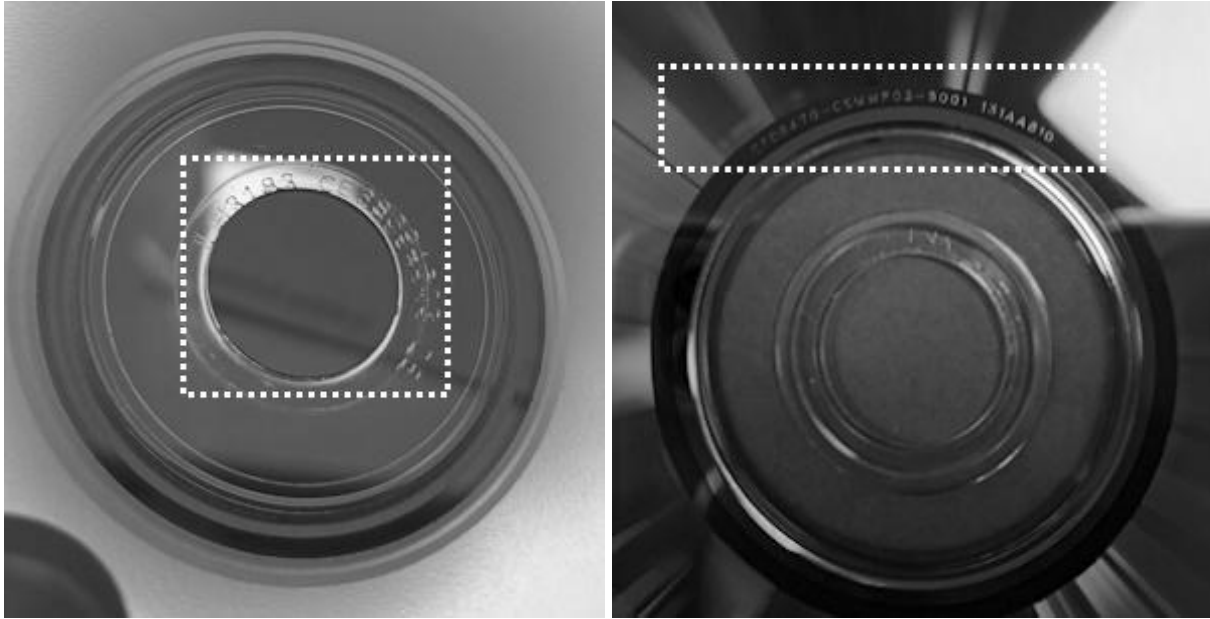
See photos below:



6. Optical Discs CD, DVD, and BD

All our optical discs have a batch number engraved or pressed at the center of the disc.

See photos below:



EU Responsible person :
DEXXON GROUPE
79 avenue Louis Roche, 92230 Gennevilliers – France
support.emtec@dexxon.eu